

**READY**

**FOR YOUR  
WHOLE FLEET**



**EnPak**  
Miller

**CabEn**  
Miller

## **TABLE OF CONTENTS**

---

<b>Optimize Your Fleet With an All-In-One.....</b>	<b>3</b>
<b>EnPak® Advantages.....</b>	<b>4-5</b>
<b>EnPak® A30 Features and Benefits.....</b>	<b>6-7</b>
<b>EnPak® A30 Specifications.....</b>	<b>8</b>
<b>EnPak® A30 Available Models.....</b>	<b>9</b>
<b>EnPak® A60 Features and Benefits.....</b>	<b>10-11</b>
<b>EnPak® A60 Specifications.....</b>	<b>12</b>
<b>EnPak® A60 Available Models.....</b>	<b>13</b>
<b>EnPak® Accessories.....</b>	<b>14</b>
<b>EnPak® Installation Considerations.....</b>	<b>15</b>
<b>EnPak® Service Kits.....</b>	<b>15</b>
<b>CabEn™ Climate Solutions.....</b>	<b>16-17</b>
<b>The Miller Difference.....</b>	<b>18</b>
<b>Next Steps.....</b>	<b>19</b>

# READY

## TO OPTIMIZE YOUR FLEET WITH AN ALL-IN-ONE



*Using a work truck's PTO to run jobsite tools can lead to lost revenue. It's time to reduce downtime, operating costs and fuel consumption, while giving operators more capabilities to get jobs done. If you're ready to increase productivity and lower expenses, you're ready for an all-in-one solution.*



### Reduce Downtime

PTOs cause excessive truck engine idling, which results in downtime for maintenance and repairs. Switching to an all-in-one solution can reduce truck engine idle time by up to **75%**, helping to keep your trucks on the job.



### Reduce Maintenance Costs

Running a truck's engine to operate a PTO can increase maintenance expenses by up to **\$4,400** per year. Reduce those costs by turning off your truck and turning on an all-in-one.



### Decrease Fuel Cost

A truck's engine uses up to **\$3,000** more in fuel than an all-in-one's engine. Switch to an all-in-one to greatly decrease the amount of fuel you use.



### Reduce Weight and Maximize Payload

A truck with both an engine-driven air compressor and an engine-driven welder/generator is heavier and has less space for tools. All-in-one solutions have a compact design that reduces truck weight by up to **500 pounds** so crews can bring everything they need and have all the capabilities to tackle any job.

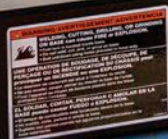
# READY

## FOR THE ENPAK<sup>®</sup> ADVANTAGE

When you choose an EnPak<sup>®</sup>, you'll get a work truck solution with industry-leading technologies to maximize efficiencies and provide operators with the power necessary to get jobs done.

**EnPak**  
A60GBHW

Miller



## RELIABILITY AND QUALITY



Every EnPak is built to handle the toughest working conditions, withstanding extreme temperatures, rain, salt, dust, impact, vibration and more. They also meet the highest applicable industry safety standards.

## CAN BUS CONNECTIVITY



Ability to connect to a telematics system to monitor engine data, machine loads and usage; track service intervals; schedule maintenance proactively and improve diagnostics of your EnPak A30 or A60.

## QUIETER OPERATION AND INCREASED EFFICIENCY



### Auto-Speed™ technology

Automatically adjusts engine speed to match compressed air, battery charge and weld demands — reducing fuel consumption, maintenance costs and noise for more efficient jobsites.



### Auto Start/Stop

Automatically turns the EnPak engine on and off based on demand, reducing fuel consumption and noise.

## REMOTE PANELS



Remote panels and outputs for battery charge, auxiliary power and welding can be installed at the point of use on the truck, so there's less need to climb onto it — reducing the risk of slip, trip or fall injuries.

## CHASSIS POWER



Monitors the truck battery and automatically charges it so operators can run inverters and 12-volt tools. No need to stop working to start the truck and charge its battery or worry about draining the battery and being stranded.



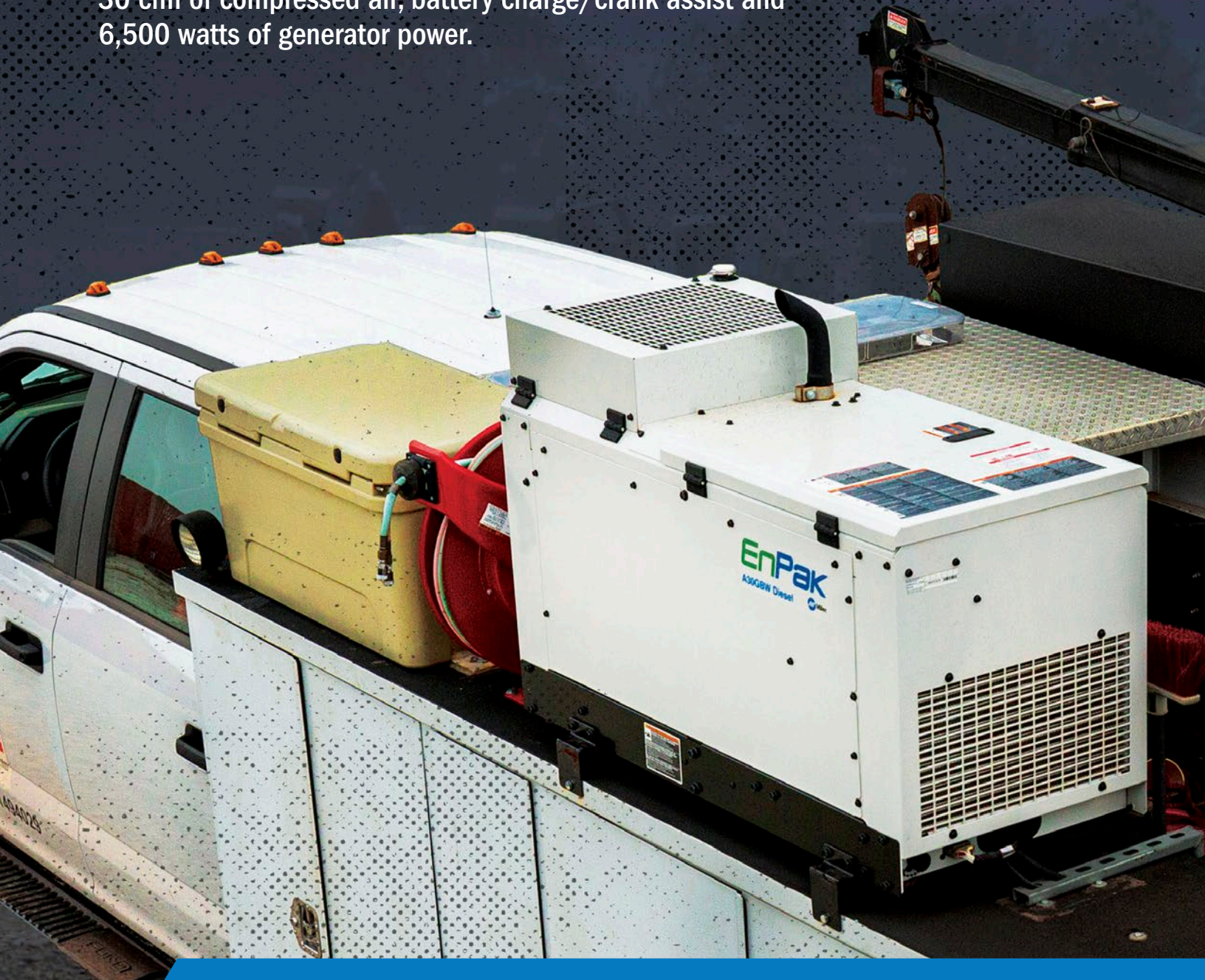
# READY

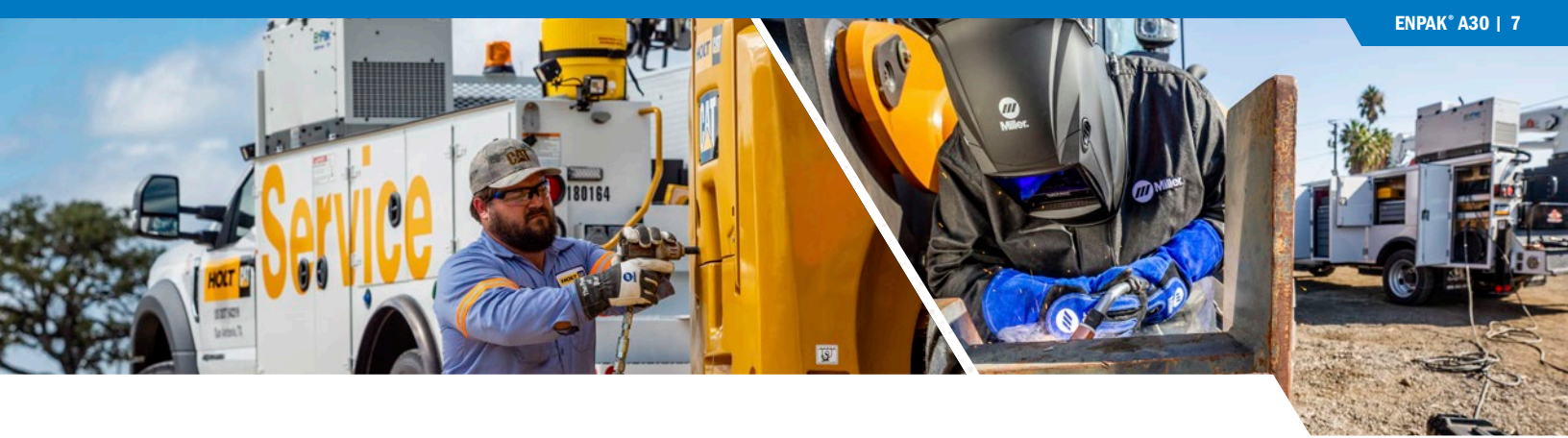
## TO TAKE IDLE OFF YOUR TRUCK WITH AN ALL-IN-ONE

### EnPak<sup>®</sup> A30



With industry-leading technologies, the EnPak A30 takes idle off your Class 3 to 5 trucks, reducing operating expenses and giving operators the power they need to get jobs done. It delivers 210 amps of integrated multiprocess welding output, 30 cfm of compressed air, battery charge/crank assist and 6,500 watts of generator power.





### Compressed Air

The EnPak A30 delivers 30 cfm of air, powered by a rotary screw compressor.



### Battery Charge/Crank Assist

The EnPak A30 provides up to 100 amps of DC power for 12/24V battery charging and up to 300 amps for crank assist.



### Electric Power

With its 6,500-watt generator, the EnPak A30 powers 120/240V AC needs.



### Remote Panels

The EnPak A30 includes one main control panel with simple, straightforward controls and a weld/battery output panel. An optional auxiliary power panel is available.



### Welding

The EnPak A30 can easily handle metal repairs with its 210-amp inverter-based welder that's capable of MIG, stick and DC TIG welding.



### Do More at Idle

The EnPak A30 delivers 20 cfm of compressed air, 125 amps of welding power and 100 amps of chassis power at idle speed (2,400 rpm). By keeping the engine at a lower speed, you save fuel and reduce noise.



### Fuel Flexibility

Available in gas or diesel models, the EnPak A30 gives fleet managers the option to standardize fuel type or integrate into the chassis fuel tank – eliminating the need to fill two tanks.

#### MAIN CONTROL PANEL



#### WELD/BATTERY OUTPUT PANEL



#### OPTIONAL AUXILIARY POWER PANEL



## ENPAK® A30 SPECIFICATIONS

<b>WEIGHT</b>	<b>GAS:</b> 530 lbs. (240 kg)
	<b>DIESEL:</b> 624 lbs. (283 kg)
<b>MACHINE DIMENSIONS</b> <i>(height x width x depth)</i>	28 in. x 20 in. x 47 in. (71.1 cm x 50.8 cm x 119.4 cm)
<b>PANEL DIMENSIONS</b> <i>(height x width x depth)</i>	<b>USER INTERFACE:</b> 5.5 in. x 16.2 in. x 3.2 in. (14 cm x 41.1 cm x 8.1 cm)
	<b>WELD BOX:</b> 6.5 in. x 9 in. x 4.75 in. (16.5 cm x 22.9 cm x 12.1 cm)
	<b>BATTERY CHARGE BOX:</b> 8 in. x 5 in. x 5.25 in. (20.3 cm x 12.7 cm x 13.3 cm)
	<b>AUX. POWER BOX:</b> 8.5 in. x 10.25 in. x 7.5 in. (21.6 cm x 26 cm x 19.1 cm)
<b>ENGINE</b>	<b>GAS:</b> Rehlko ECH730, 23.5 hp
	<b>DIESEL:</b> Kubota D722, 19 hp
<b>FUEL SYSTEM</b>	<b>GAS:</b> Integrated fuel tank (standard) or plumbed to truck fuel tank (optional)
	<b>DIESEL:</b> Plumbed to truck fuel tank
<b>GENERATOR</b>	6,500 watts, 120/240V AC
<b>WELDING</b>	210A @ 20% duty cycle
<b>BATTERY CHARGE</b>	12/24V, up to 100A
<b>CRANK ASSIST</b>	12/24V, up to 300A
<b>AIR COMPRESSOR</b>	30 cfm @ 175 psi, rotary screw, 100% duty cycle



## ENPAK® A30 AVAILABLE MODELS



**EnPak® A30GBW: Base Model** 907772  
Air compressor and welding



**EnPak® A30GBW Diesel** 907759  
Air compressor and welding

**EnPak® A30GBW Diesel with Installed Cold Weather Package** 907759001  
Air compressor and welding; cold weather package (compressor oil heater, fuel heater)

# READY

## TO GIVE YOU MORE WITH AN ALL-IN-ONE

### EnPak<sup>®</sup> A60



Give your Class 5 and above truck fleet more capabilities with the EnPak A60. It has 325 amps of integrated multiprocess welding output, a hydraulic pump with up to 16 gpm of output, a 60-cfm air compressor, a 7,000-watt generator and more — all in a compact machine. Its industry-leading technologies allow your operators to get work done more efficiently, reduce truck engine idle time across your fleet and maximize your return on investment.





## POWERFUL CAPABILITIES



### Integrated, High-Output, Multiprocess Welder

Legendary Miller weld quality and reliability with up to 325 amps of output for line boring, structural repair, bucket repair, carbon arc gouging and more.



### Integrated, Up-to-16-gpm Hydraulic Pump

Well-regulated hydraulic fluid flow for fast and precise crane operation.



### 60-cfm Rotary Screw Air Compressor

Uninterrupted airflow that easily powers impact wrenches and pneumatic pumps.



### Battery Charge/Crank Assist

Up to 150 amps of DC power for 12/24V battery charging; up to 300 amps for crank assist.



### 7,000-Watt Generator

Continuous 120/240V, 60Hz power for high-demand electrical tools.

## TURBOCHARGED DIESEL ENGINE



### Turbocharged Diesel Engine

The EnPak A60 delivers high torque at idle speed (1,800 rpm). By keeping the engine at a lower speed, you save fuel and reduce noise. The turbodiesel engine outperforms in all environments – even at high elevations – so operators have power to work anywhere.

## INNOVATIVE LCD CONTROL PANEL



### Intuitive Visual Dashboard

Shows key performance indicators of all EnPak systems; allows operators to change settings and configurations easily and quickly.



### Power Priority

Operators can quickly access the settings menu to maximize available power, prioritizing the air compressor or hydraulic system based on what is needed for optimal tool performance.



## ENPAK® A60 SPECIFICATIONS

<b>WEIGHT</b>	<b>907813 ENPAK® A60GB:</b> 641 lbs. (290.8 kg)
	<b>907814 ENPAK® A60GBH:</b> 737 lbs. (334.3 kg)
	<b>907856 ENPAK® A60GBW:</b> 646 lbs. (293.0 kg)
	<b>907815 ENPAK® A60GBHW:</b> 740 lbs. (335.7 kg)
<b>MACHINE DIMENSIONS</b> <i>(height x width x depth)</i>	27 in. x 21 in. x 46 in. (68.6 cm x 53.3 cm x 116.8 cm)
<b>PANEL DIMENSIONS</b> <i>(height x width x depth)</i>	<b>USER INTERFACE:</b> 8.9 in. x 10.3 in. x 2.5 in. (22.6 cm x 26.2 cm x 6.4 cm)
	<b>WELD BOX:</b> 6.5 in. x 9 in. x 4.75 in. (16.5 cm x 22.9 cm x 12.1 cm)
	<b>BATTERY CHARGE BOX:</b> 8 in. x 5 in. x 5.25 in. (20.3 cm x 12.7 cm x 13.3 cm)
	<b>AUX. POWER BOX:</b> 8.5 in. x 10.25 in. x 7.5 in. (21.6 cm x 26 cm x 19.1 cm)
<b>ENGINE</b>	Kubota D902 turbo, 24.8 hp
<b>GENERATOR</b>	7,000 watts, 120/240V AC
<b>HYDRAULICS</b>	Up to 8 gpm @ 3,000 psi; 50% duty cycle
	16 gpm max flow – open center
	16 gpm max flow – with optional Closed Center Conversion Kit
<b>WELDING</b>	325A @ 100% duty cycle
<b>GOUGING</b>	<b>5/32-inch carbons and smaller:</b> Continuous air output.
	<b>1/4-inch carbons and larger:</b> Limited to size of air tank on truck. When tank is empty, gouge output turns off. Once tank is refilled, gouge output turns back on.
	<b>1/4-inch carbons and larger with 30-gallon air tank:</b> Approximately two-minute on time with approximately 40 seconds to refill tank.
<b>BATTERY CHARGE</b>	12/24V, up to 150A
<b>CRANK ASSIST</b>	12/24V, up to 300A
<b>AIR COMPRESSOR</b>	60 cfm @ 175 psi, rotary screw, 100% duty cycle



## ENPAK® A60 AVAILABLE MODELS



### EnPak® A60GB 907813

Air compressor only

### EnPak® A60GB Cold Weather Package 907813001

Air compressor only; cold weather package (compressor oil heater, fuel heater)

### EnPak® A60GBH 907814

Air compressor and hydraulics (open center only; Closed Center Conversion Kit available)

### EnPak® A60GBH Cold Weather Package 907814001

Air compressor and hydraulics (open center only; Closed Center Conversion Kit available), cold weather package (compressor oil heater, fuel heater)

### EnPak® A60GBW 907856

Air compressor and welding

### EnPak® A60GBW Cold Weather Package 907856001

Air compressor and welding; cold weather package (compressor oil heater, fuel heater)

### EnPak® A60GBHW 907815

Air compressor, hydraulics (open center only; Closed Center Conversion Kit available) and welding

### EnPak® A60GBHW Cold Weather Package 907815001

Air compressor, hydraulics (open center only; Closed Center Conversion Kit available) and welding, cold weather package (compressor oil heater, fuel heater)

## ENPAK® ACCESSORIES



### READY TO WORK ACCESSORY KIT

Includes auxiliary power remote panel, battery charge/jump cables and 50 ft. (15.2 m) weld cables with electrode holder and work clamp.

951858



### HYDRAULIC TANK RESERVOIR KIT 20 gal. (76 L)

301612



### AUXILIARY POWER REMOTE PANEL

Includes two 120 V receptacles with circuit breakers and one 120/240 V, 50 A receptacle. **Cabling NOT included.**

301562



### WIRE FEEDERS

#### ArcReach® SuitCase® 8

951726001 - With Bernard® BTB Gun, 300A

951727 - With Bernard® S-Gun™

951728 - With Bernard® Dura-Flux™ gun

#### ArcReach® SuitCase® 12

951729001 - With Bernard® BTB Gun, 300A

951730 - With Bernard® S-Gun™

951731 - With Bernard® Dura-Flux™ gun



### SPOOL GUNS

#### Spoolmatic® 30A spool gun

130831

#### Spoolmate™ 200 spool gun

300497



### PLASMA CUTTERS

#### Spectrum® 375 X-TREME™

907529

#### Spectrum® 625 X-TREME™

907579

► For a complete list of available accessories, see the specification sheet for your EnPak model.

## ENPAK® INSTALLATION CONSIDERATIONS

Get expanded capabilities from your EnPak with these components.  
Consult your Miller-authorized truck upfitter for more details.

<b>AIR TANK</b>	Requires 10-gallon minimum (20-gallon recommended for A60 models) air reservoir for installation – NOT provided by Miller.
<b>CRANE/COMMUNICATION ADAPTERS</b>	<b>IMT® Series IV Harness</b> 301748
	<b>NexStar™, wireless remote</b> 300772
	<b>Six wire crane</b> 300832
	<b>Stellar®, wireless CDT</b> 300908
<b>HYDRAULIC RESERVOIR</b>	<b>20-gallon (76L)</b> 301612

## ENPAK® SERVICE KITS



**DIESEL ENGINE FILTER KIT (EnPak® A30/EnPak® A60)**  
Includes oil filter, fuel filter, air filter and secondary fuel filter.

284101



**GASOLINE ENGINE TUNE-UP KIT (EnPak® A30)**  
Includes oil filter, fuel filter with clamps, in-line fuel filter, air filter, air filter pre-cleaner and spark plugs.

284119



**AIR COMPRESSOR SERVICE KIT**  
Includes oil filter, air filter, oil separator and compressor oil.

**EnPak® A30:** 275644

**EnPak® A60:** 279123


**READY**
**TO CONTROL CAB CLIMATE  
WITHOUT IDLING YOUR TRUCK**

## **CabEn™ CLIMATE SOLUTIONS**



Miller® CabEn™ Climate Solutions are heating and cooling systems that are integrated in truck cabs to control temperatures without idling the truck engine, saving up to \$11,000 every year on fuel, maintenance, repairs and downtime. Only CabEn Climate Solutions control cab temperatures without taking up space or requiring extensive cab modifications – and they can run all day without the limitations of battery power.

### **CabEn™ CLIMATE PAK**

For work trucks that operate in both cold and hot environments, CabEn Climate Pak is a fully integrated heating and cooling solution. It includes both CabEn Heat and CabEn Cool equipment, so your operators have relief from the outside environment with the truck engine turned off.

### **CabEn™ HEAT**

For work trucks that primarily operate in cold environments, CabEn Heat warms the cab using a heater that's powered by the truck's diesel fuel supply. The truck's engine never needs to run to keep operators warm.

### **CabEn™ COOL**

For work trucks that primarily operate in hot environments, an EnPak power system provides the power that CabEn Cool needs to maintain the cab at a comfortable temperature all day long – without the limitations of battery-operated cooling systems.



**Truly Eliminate Truck Engine Idling With All-In-One Power**

CabEn Climate Solutions keep the cab at a comfortable temperature without running the truck engine, so you can switch to all-in-one power and truly eliminate idling.



**No Cab Modifications or Lost Space**

CabEn Climate Solutions utilize many existing truck HVAC components and controls, so the truck doesn't require major modifications or additional components that take up room – protecting your investment and maximizing cab space and payload.



**Proven Solutions**

We partnered with recognized industry leaders to design, engineer and manufacture CabEn Climate Solutions with legendary Miller dependability.



**CabEn™ Cool** is produced by Bergstrom Inc., the leading designer and manufacturer of cab climate systems for heavy-duty commercial trucks, off-highway commercial trucks, off-highway machines and specialty vehicles.



**CabEn™ Heat** is produced by Eberspaecher, one of the world's leading developers and suppliers of vehicle heating systems and automotive controls.

**PART NUMBERS**

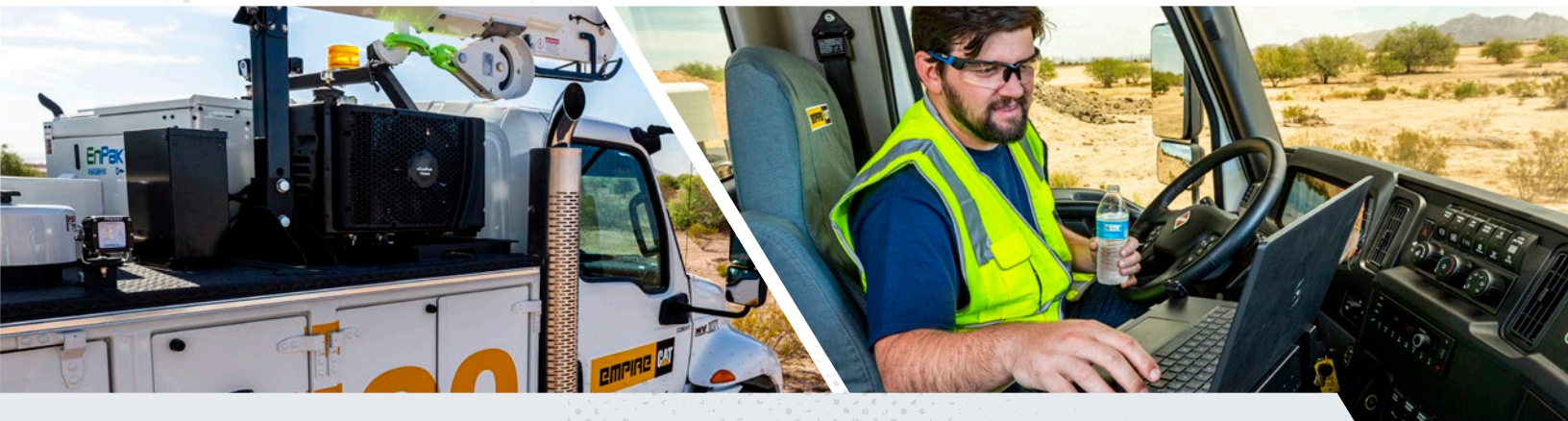
**CabEn™ Climate Pak (w/unboxed heater):** 951928

**CabEn™ Climate Pak (w/boxed heater):** 951933

**CabEn™ Cool:** 951929

**CabEn™ Heat (boxed):** 951930

**CabEn™ Heat (unboxed):** 951931





# THE MILLER DIFFERENCE



When you put EnPak® and CabEn™ Climate Solutions to work in your fleet, you'll have more than powerful equipment to drive productivity and reduce expenses. You'll have the confidence that comes from owning a Miller® product. Engineered with precision and built to last, your new equipment is backed by a three-year Miller True Blue® Warranty.

## NEXT STEPS

### ▶ **Talk to Your Truck Upfitter**

They're ready to help optimize your fleet with a Miller work truck solution. To find an upfitter near you, visit [MillerWelds.com/TruckUpfitterLocator](https://www.millerwelds.com/TruckUpfitterLocator)

### ▶ **Request a Demonstration**

The best way to experience the benefits of an EnPak power system is to see it in action. For more information, visit [MillerWelds.com/EnPakDemo](https://www.millerwelds.com/EnPakDemo)

### ▶ **Need Service?**

Call 920-734-9821 to find an authorized Miller service center near you.

### ▶ **Register Your Product**

It's fast and easy, and it delivers many benefits. Learn more at [MillerWelds.com/RegisterEnPak](https://www.millerwelds.com/RegisterEnPak)





**FOR MORE INFORMATION, VISIT**  
**[MillerWelds.com/trucks](http://MillerWelds.com/trucks)**

#291028 © 2026 Miller Electric Mfg. LLC  
Miller, Miller True Blue, the Miller logo, ArcReach, Bernard, EnPak, Spectrum, Spoolmatic and SuitCase are registered trademarks of Illinois Tool Works, Inc.  
Auto-Speed, CabEn, Dura-Flux, S-Gun, Spoolmate and X-TREME are trademarks of Illinois Tool Works, Inc.  
Auto Crane is a registered trademark of Auto Crane Company.  
IMT is a registered trademark of Iowa Mold Tooling Co., Inc.  
NexStar is a trademark of Auto Crane Company.  
Stellar is a registered trademark of Stellar Industries, Inc.

