



FILTAIR® Fume Extraction Systems

Designed to mitigate weld fume at the source and improve compliance.

Why Fume Extraction Systems?

Providing a clean and compliant workplace doesn't need to be complicated. Following OSHA's Hierarchy of Controls allows you to establish and implement an effective fume management program to improve:



Compliance



Worker Retention & Recruiting



Maintenance



Productivity



#4 Respiratory Protection

OSHA's 2024 Top Ten Most Cited Violations is 1910.134

Where should you start?



Assess Your Air Quality

Have a certified industrial hygienist perform a worksite analysis and test the air in your facility to make sure contaminant levels fall within exposure limits outlined by OSHA or other applicable government occupational limits.



Determine Your Action Plan

Contact our dedicated safety solutions management team to be guided through every step of the process and customize an optimal system for your unique welding environment and specific challenges.



1 **Process Modification & Substitution:** Eliminates the exposure before it can occur using low manganese wire, advanced welding processes or equipment.

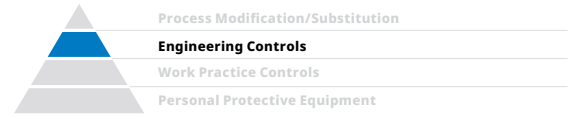
2 **Engineering Controls:** Requires a physical change in the workplace such as implementing local exhaust ventilation or fume extraction systems.

3 **Work Practice Controls:** Requires a change in workplace procedures such as training and education on best practices for weld processes and position.

4 **Personal Protective Equipment:** Requires the worker to wear personal protective equipment when respiratory protection may be required to reduce weld fume exposure.

Why Miller® FILTAIR®?

Miller® FILTAIR® Difference



FILTAIR® Technology (See page 4 for details)

- ZoneFlow™ provides up to a 5-foot capture zone
- FilTek® Filters extend filter life

FILTAIR® Portfolio (See page 6-11 for details)

- Fume extraction systems engineered specifically for welding
- Custom engineering to suit your specific environment and fume control needs
- Miller® provides one stop with fully supported systems

FILTAIR® Partnership (See page 5 for details)

- Our team of safety solutions management professionals help you find the best solution for your environment
- Provide a turn-key approach from start to finish with weld fume mitigation expertise, system engineering and design, installation support and training
- Ongoing partnership to ensure full benefits are being received from your fume extraction system with an ongoing partnership

Ideal Environments

-  Schools
-  Training Facilities
-  Manufacturing Facilities
-  Automation Cells
-  Fabrication Shops
-  Apprenticeship and Labor Unions



Discover how Muscle Car Restorations has improved air quality and productivity with FILTAIR® MWX:
MillerWelds.com/mcrestorations

FILTAIR® Technologies

ZoneFlow™ Technology

A capture zone up to 3X larger than traditional systems
 mean operators can benefit from:

- **Less Arm Movement**
 Maintain an effective capture zone without having to constantly adjust the arm allowing operators to stay focused on welding and comfortable without interruptions
- **Increased Productivity**
 Significantly reduce arm interactions
 – increasing arc-on-time
- **Lower Cleaning and Maintenance Costs**
 Facility will stay cleaner, potentially reducing cleaning and maintenance costs
- **Clean Environment**
 A larger capture zone makes it easier to effectively capture weld fume and maintain a clean environment, helping to achieve compliance



INCREASE PRODUCTIVITY BY UP TO 22%

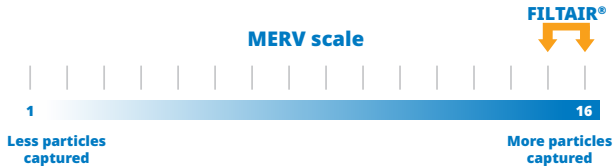
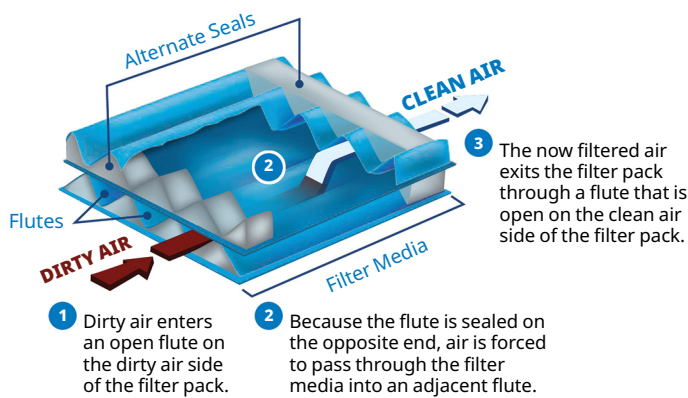
Traditional System: 12 to 18-inch capture
ZoneFlow™ Technology: up to 5-foot capture

 Watch ZoneFlow™ in action: youtube.com/watch?v=0AexQ5r018M

Available in: Mobile Systems: Capture 5
 Stationary Systems: SWX-D & SWX-S
 Centralized Systems: 4000-12000
Learn More: MillerWelds.com/zoneflow

FilTek® XL Filter Technology

FilTek® XL Filter Technology offers a longer filter life – up to two times that of treated cellulose filters and superior filtering of up to 95 percent of weld fume particulate. Easy-clean surface-loaded filter technology allows for more effective weld fume pulse cleaning without penetration into the filter. This provides an easier filter cleaning process, while outlasting conventional cartridge filters, improving weld fume capture for a cleaner workspace.



MERV Rating Scale

M=Minimum **E**=Efficiency **R**=Reporting **V**=Value
 Filters are rated on a MERV scale, which measure filter efficiency based on particle count. Filters in common air filtration systems often have MERV ratings between 7-11.

Applicable Weld Fume MERV Rating Categories ¹	Particle Size Range Efficiency % ²		
	0.3 to 1 µm	1 to 3 µm	3 to 10 µm
10	Not Rated	50 - 65%	85%
11	Not Rated	65 - 80%	85%
12	Not Rated	80 - 90%	85%
13	<75%	90%	90%
14	75 - 85%	90%	90%
15	Miller® FilTek XL	≥95%	≥95%
16		85 - 95%	90%
Percentage of Weld Fume Particle Size ³	75 - 95%	15%	10%

FILTAIR® Partnership

Miller® FILTAIR® Fume Extraction Systems are designed to fit your needs today, with the flexibility to adapt to tomorrow's demands, helping you reach or maintain compliance with mandated fume regulations – improving productivity, performance, and your bottom line.

Our experienced team will guide you through every step of the process and customize an optimal system for your unique welding environment and specific challenges.

CONTACT A MILLER SAFETY
SOLUTIONS MANAGER

Process Overview

- 1 Worksite Evaluation**
We will evaluate your job site and advise on the best fume extraction solution to mitigate fume at the source.
- 2 System Engineering and Design**
A custom-engineered solution will be designed specifically for your fume control needs.
- 3 Comprehensive Project Management**
We will work with you to complete installation of unit(s) and schedule time for in-person training for successful implementation.
- 4 Support, Training and Ongoing Partnership**
You will be trained on how to properly use the system and follow up to ensure you are receiving the full benefits of the fume extraction equipment.



High-Vacuum Systems



FILTAIR® 130 High-Vacuum

Lightweight and portable high-vacuum weld fume extractor ideal for moving with the weld operator and work.

Ideal for: Contractors, Maintenance & Repair Operations, Light Fabrication

Nominal Airflow: 132 cfm

Filter Media: 31 sq. ft.

Sound Level: Approximately 68.5 dBA at 5 ft

Net Weight: 46 lb.

Input Power: 115 V, 1-phase, 60 Hz at 11 A

Key Product Features:

Portable Unit

At only 46 pounds, the lightweight vertical shaped extraction machine is easy to move around for effortless portability

70% Quieter

Up to 70 percent quieter than some other fume extractors at only 68.5 dBA per 5-feet provides a safer and more productive work area

Variable Flow Control

Airflow can be adjusted to fit specific applications and accessories

Particulate Bin

Provides easy and convenient access to empty the collected weld fume particulate

Lockable Swivel Caster Wheels

System stays where you want it, even during arm movements

Filter Service Indicator
Alerts operator when the filter needs to be cleaned to maintain extraction performance and increase filter life





FILTAIR® 215 High-Vacuum

Versatile, high-vacuum system that maximizes flow capacity for multiple operators using portable extraction attachments such as nozzles and fume guns — for efficient multi-use weld fume capture at the source.

Ideal for: Manufacturing, Fabrication

Nominal Airflow: 215 cfm

Filter Media: 75 sq. ft.

Sound Level: Approximately 80 dBA at 5 ft.

Net Weight: 390 lb.

Input Power: 230V, 460V & 575V, 3-phase, 60 Hz

Key Product Features:

Optimal Airflow

An airflow rating of 215 cfm allows up to 4 fume guns and attachments without sacrificing weld fume capture

Self-Cleaning Filter Mechanism

A pulse cleaning cycle is automatically activated when needed, extending filter life by up to 8x

Portable Attachments*

Run multiple fume guns and accessories with over a 130 ft. reach for weld fume capture at the source

Particulate Disposal Bin

Easy to access with handles that release drawer located on back of machine

Large Rear Wheels and Metal Cabinet

Designed to withstand industrial environments

Durable Design

Flat-top design capable of holding dual wire feeder, storage handles to keep attachments organized

Compatible with Most Fume Guns

Optimized performance with Bernard® Clean Air E™ Guns

UP TO 95%
FUME CAPTURE

Auto Start-Stop (optional)

Fume extractor remains off until the sensor detects torch activity, maximizing energy savings and extending filter life

Variable Flow Control

Airflow can be adjusted to fit specific applications and accessories



*System comes with 1 hose

Optional Y-adapter

Allows connection of up to four fume guns or other attachments



Mobile Systems



FILTAIR® MWX Mobile System

Mobile weld fume extractors designed to easily move with the weld operator and work. Available in MWX-D (Disposable) and MWX-S (Self-Cleaning) filter mechanisms.

Ideal for: Contractors, Maintenance & Repair Operations, Light Fabrication

Nominal Airflow: 1,200 cfm

Sound Level: Approximately 70 dBA at 5 ft.

Filter Media: 490 sq. ft.

Net Weight: 238-300 lb.

Input Power: 115 V, 1-phase, 60 Hz at 11.9 A

Key Product Features:

Flexible Capture Zone

Provides 360-degree rotation to obtain the best position at any angle – limiting the amount of weld fume entering the breathing zone

Standard Extraction Arms

Easy to operate standard extraction arms with external adjustments allow air to pass through with less airflow resistance giving you stronger airflow. Easy maintenance ensures long-lasting operation and increased ROI

Self-Cleaning Filter Mechanism (MWX-S)

A pulse cleaning cycle is automatically activated when needed, extending filter life by up to 8x

External Adjustments

Provide convenient access for maintenance and less airflow resistance inside the arm for stronger cfm

Built-in Tool Tray

Convenient area to place tools without them rolling off of the unit

Metal Cabinet Design

Long-lasting durability even in the toughest of environments

Large Rear Wheels

Easy movement from one work area to another

Lockable Swivel Caster Wheels

System stays where you want it, even during arm movements





FILTAIR® Capture 5 Mobile System

Extended-capture fume extraction system designed specifically to capture fume in larger weld areas while minimizing interactions with the arm.

Ideal for: Heavy Equipment Manufacturing Fabrication, Maintenance and Repair Operations, Training Centers

Nominal Airflow: 900 cfm

Sound Level: Approximately 77 dBA at 5 ft.

Filter Media: 452 sq. ft.

Net Weight: 555-660 lb.

Input Power: 208/230 V, 1-phase, 60 Hz
460 V, 3-phase, 60 Hz

Key Product Features:

ZoneFlow™ Integrated Solution

Built-in ZoneFlow™ extraction arm creates positive and negative air pressure that funnels weld fume to the center maximizing capture distance.

Up to **3x larger capture zone** than traditional extractors reducing arm movements and increasing operator productivity

Self-Cleaning Filter Mechanism

A pulse cleaning cycle is automatically activated when needed, extending filter life by up to 8x

Metal Cabinet Design

Long-lasting durability even in the toughest environments

Large Rear Wheels

Easy movement from one work area to another

Tool-Free External Adjustments

All adjustments can quickly be made by hand, increasing arc-on time

Lockable Swivel Caster Wheels

System stays where you want it, even during arm movements



Stationary Systems

FilTek™
XL
Filter

MERV
15

Zone
Flow™

FILTAIR® SWX Stationary System

Wall or column mounted weld fume extractors designed for environments that do not have extensive floor space. Available SWX-D (Disposable) and SWX-S (Self-Cleaning) filter mechanisms.

Ideal for: Schools & Training Facilities,
Manufacturing & Fabrication,
Fixed Welding Cells/Stations

Nominal Airflow: 1,200 cfm

Sound Level: Approximately 80 dBA at 5 ft

Filter Media: 490 sq. ft.

Net Weight: 130-195 lb.

Blower Motor Input Power: 115 V, 1-phase,
60 Hz at approximately 11.9 A

ZoneFlow™ Input Power: 115 V, 1-phase,
60 Hz at approximately 12 A

Key Product Features:

Stationary Design

Can be wall- or column-mounted to cover larger spaces and free up floor space

ZoneFlow™ or Standard Extraction Arms

ZoneFlow™ arms provide up to **3x larger capture zone** than traditional extractors, reducing arm movements and increasing operator productivity

Telescoping Arms

Designed to fit small weld booths used in training centers and educational booths. Telescopes from 3 to 4.5 feet with a wide range of motion to cover all positions.

Self-Cleaning Filter Mechanism (SWX-S)

A pulse cleaning cycle is automatically activated when needed, extending filter life by up to 8x



360-Degree Rotation

Unlimited hood positioning for optimum capture at any angle

High-Performance Fan 1,200 cfm at the blower



Dual Fan Control

Both fans can be turned on for a 360-degree capture zone or one side can be turned off to position next to a wall or curtain for a 180-degree capture zone

Industrial Air Purifiers



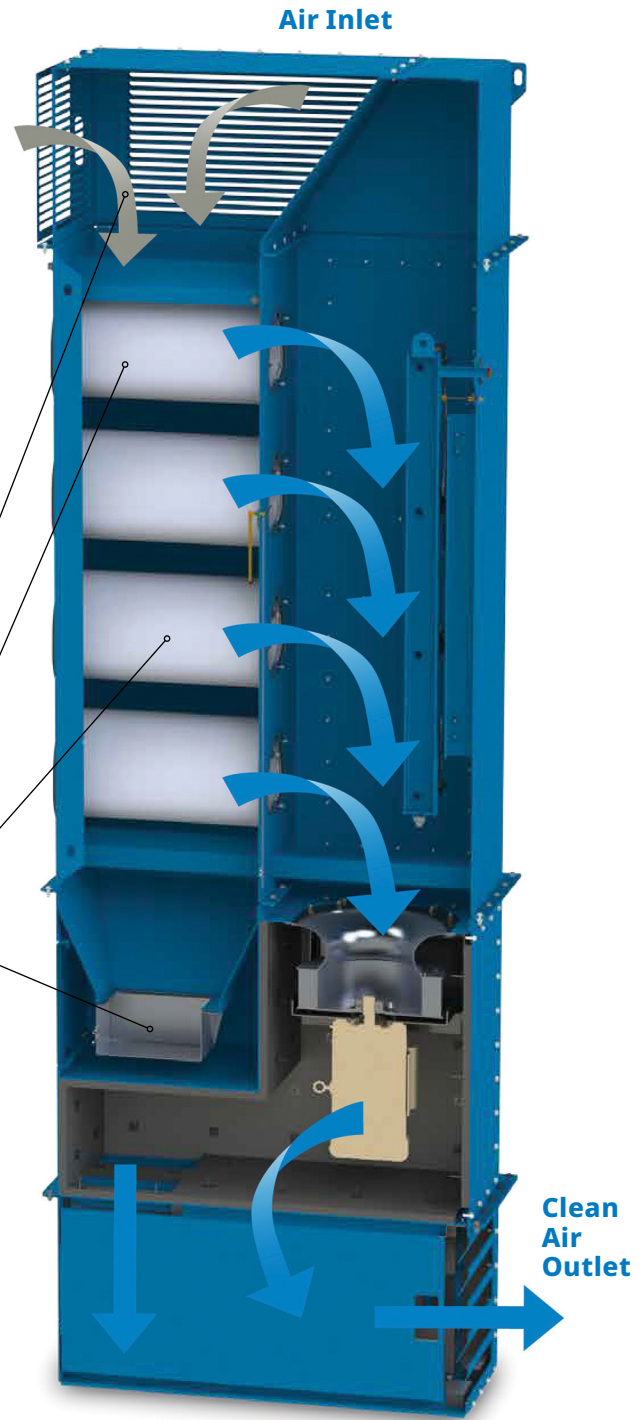
FILTAIR® Purifier

The FILTAIR® Purifier is a stand-alone system that efficiently captures lingering weld fumes as they ascend, while circulating filtered air near floor level to improve overall air quality.

- Ideal for:** Manufacturing, Fabrication, and Schools & Training Facilities
- Sound Level:** 75–80 dBA
- Nominal Airflow:** 7,000 cfm
- Filter Media:** 2,032 sq. ft.
- Compressed Air:** 9.75 scfm at 60 psig
- Total Filters:** 8
- Fan Horsepower:** 15 hp
- Input Power:** 230V, 460V or 575V, 3-phase, 60 Hz



- Natural Circulation Pattern**
Efficiently captures rising weld fumes
- Easy to Service**
Convenient access to filters for tool-free removal and installation
- FilTek™ XL Filters (MERV 15)**
Ultra-efficient filter media design for lower operating costs and strong suction power for a cleaner work space
- Hassle-Free Dust Removal**
Convenient, easy-to-handle dust bin



Centralized Systems



FILTAIR® Centralized System

Custom engineered industrial centralized solutions designed for multiple capture sources that require ducting and accessories to complete the system. Available in 4000-12000 models.

Ideal for: Manufacturing Facilities, Automated Welding Cells, Schools & Training Facilities

Nominal Airflow: 2,000-10,500 cfm¹

Sound Level: Approximately 72-75 dBA at 5 ft.

Filter Media: 588-1,764 sq. ft.¹

Net Weight: 1,600-3,900 lb.¹

Input Power: 230, 460 or 575 V, 3-phase, 60 Hz

Key Product Features:

Up to 65% smaller footprint than most Cartridge Collectors

Maximizes floor space for more profitable work stations increasing weld time

Up to 75% Quieter than Traditional Systems

Motor is located on inside of the unit

Easier Installation

Completely packaged, fully assembled and pre-wired system

ZoneFlow™ or Standard Extraction Arms

ZoneFlow™ arms provide up to **3x larger capture zone** than traditional extractors, reducing arm movements and increasing operator productivity

Telescoping Arms

Designed to fit small weld booths used in training centers and educational booths. Telescopes from 3 to 4.5 feet with a wide range of motion to cover all positions.

Self-Cleaning Filter Mechanism

A pulse cleaning cycle is automatically activated when needed, extending filter life by up to 8x

Steel Structure

Durable steel enclosure compliant with IBC1006 resists rust and abrasions

Integrated or External Control Panel

Control panel manages all collector functions, including the fan, filter differential, and the pulse cleaning system

Easy to Service

Convenient access to filter packs for tool-free removal and installation

Low Profile Hoods Available



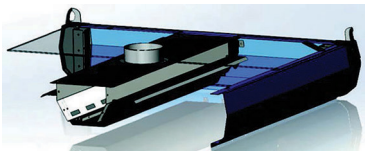
**INDOOR/OUTDOOR
OPTIONS AVAILABLE**

¹Dependent on model
Centralized systems require ducting and accessories to complete the system.



FILTAIR® Low Profile Hoods

Modular extraction hoods, designed to be hung, supported by legs or placed over robotic semi-automatic welding and cutting operations, efficiently capture thermally generated fume from industrial operations.



FILTAIR Low Profile Hood



Low Profile

- Takes up less vertical space, allowing placement where there are low ceilings
- More efficiently captures weld fume and requires less cfm compared to fabricated canopy hoods, leading to lower operating costs
- Available in 4x4 feet up to 16x16 feet in one-foot increments

Innovative Source-Extraction Rail Technology

- Less air required to effectively capture fume
- Extraction rail technology evenly distributes airflow for efficient collection
- Capture zone is distributed over the work area and is more effective at source capture over traditional canopy or perimeter extraction hoods

Lower Operation Costs

- Efficient design requires up to 40 percent less airflow compared to standard canopy hoods

Find out how Chandler equipment has improved productivity and their bottom line with FILTAIR:
MillerWelds.com/Chandler

Weld Booths

Configurable weld booths with single-panel design for maximum modularity and customizability. Engineered to seamlessly integrate into a variety of training and other welding environments.

Ideal for: Heavy Equipment Manufacturing, Fabrication, Schools & Training Facilities

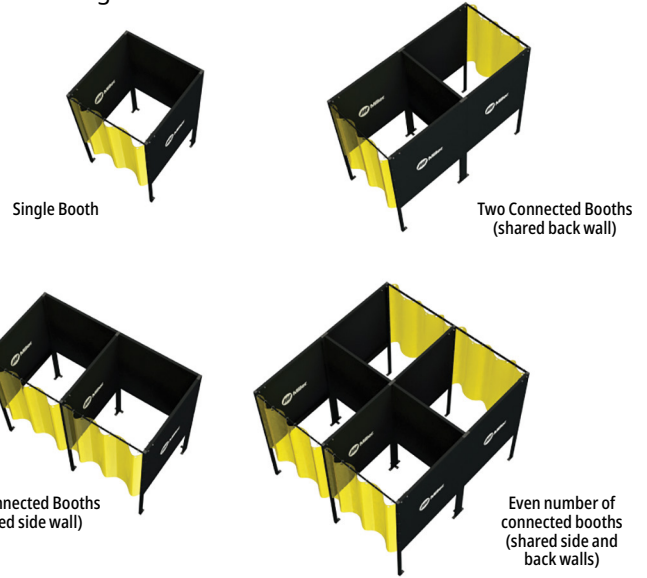
Key Product Features:

Black textured powder coat for sleek look and long-lasting durability

Walls are 27.5 inches from the ground to provide safety and accessibility

California fire marshal approved, amber see-through weld curtains

Multiple different arm mounting locations



Single-Panel Modular Design

Fits any space with a variety of configurations

Simple nut & bolt assembly

Weld Booth Panels

Available in 4, 5, and 6-foot widths to be used as back or side walls

Floor Anchoring Feet

Optional and installation is the responsibility of customer

Hardware Kit

Includes weld curtain, curtain rod and hardware (one per booth)





 Miller.

 Miller.

FILTAIR® Fume Extraction Selection Chart

	HIGH-VACUUM		MOBILE
	FILTAIR® 130	FILTAIR® 215	FILTAIR® MWX
Ideal Applications	Light Fabrication Manufacturing Contractors MRO	Manufacturing Fabrication	Fabrication Manufacturing Training Facilities
ZoneFlow™	No	No	No
Size	23" x 12" x 12"	30" x 22" x 46"	MWX-D: 34.75" x 31.75" x 48" MWX-S: 34.75" x 31.75" x 48"
Weight	46 lb.	390 lb.	MWX-D: 238 lb. MWX-S: 300 lb.
Nominal Airflow	132 cfm	215 cfm	1,200 cfm
Capture	<ul style="list-style-type: none"> • Bernard®Clean Air E™ Guns • Flex Funnel Nozzle • Slotted Nozzle • Collection Hose - up to 34 feet away 	<ul style="list-style-type: none"> • Bernard®Clean Air E™ Guns • Flex Funnel Nozzle • Slotted Nozzle • Collection Hose - up to 34 feet away 	<ul style="list-style-type: none"> • 7, 10, or 12 foot extraction arms
Filter Type	Manual Cleaning	MWX-D: Disposable MWX-S: Self-Cleaning	MWX-D: Disposable MWX-S: Self-Cleaning
Filter Efficiency	MERV 15	MERV 16	MERV 15
Filter Media	31 sq. ft.	75 sq. ft.	490 sq. ft.
Input Power	115V / 1ph. / 60Hz / 11A	230V, 460V & 575V / 3ph. / 60 Hz	115V / 1ph. / 60Hz / 11.9A
Sound Level at 5-Feet	68.5 dBA	70 dBA (low) 80 dBA (high)	70 dBA

*Upgrade to self-cleaning models with high arc-on time, extracting from heavy fume processes, and when welding aluminum or galvanized materials.
**FILTAIR® 4000 has 4 filters, FILTAIR® 6000 has 6 filters, FILTAIR® 8000 has 8 filters and FILTAIR® 12000 has 12 filters

	STATIONARY	CENTRALIZED	INDUSTRIAL AIR PURIFIERS
FILTAIR® Capture 5	FILTAIR® SWX	FILTAIR® 4000-12000	FILTAIR® Purifier
Fabrication Heavy Equipment Manufacturing MRO	Fabrication Manufacturing Training Facilities	Fabrication Manufacturing Automation Training Facilities	Manufacturing Fabrication and Schools Training Facilities
Available	Optional	Optional	No
43" x 46" x 48"	SWX-D: 29" x 27.25" x 33" SWX-S: 30" x 27.25" x 33"	Varies	170" x 48" x 62"
600 lb.	SWX-D: 130 lb. SWX-S: 195 lb.	Varies	3,272 lb.
900 cfm	1,200 cfm	2,000 – 10,500 cfm	7,000 cfm
• 10 and 12 foot ZoneFlow™ extraction arms	• 4.5 foot (Telescopic), 7, 10 or 12 foot extraction arms • 10 and 12 foot ZoneFlow™ extraction arms	• 4.5 foot (Telescopic), 7, 10 or 12 foot extraction arms • 10 and 12 foot ZoneFlow™ extraction arms • Automation Cell Low-Profile Hood	• 8 Filters
Self-Cleaning	SWX-D: Disposable SWX-S: Self-Cleaning ZoneFlow™: Self-Cleaning	Self-Cleaning	Self-Cleaning
MERV 15	MERV 15	MERV 15	MERV 15
452 sq. ft.	490 sq. ft.	147 sq. ft. per filter**	2,032 sq. ft.
460V / 3ph. / 60Hz / 13.7A	115V / 1ph. / 60Hz / 11.9A	230, 460, 575V / 3ph. / 60Hz	230V, 460V or 575V, 3-phase, 60 Hz
77 dBA	75 dBA ZoneFlow™: 80 dBA	75 dBA ZoneFlow™: 80 dBA	75–80 dBA

Ordering Information

FILTAIR® 130 – Portable System

300595	FILTAIR® 130
951860	FILTAIR® 130 Portable Fume Extractor Package

FILTAIR® 215 – Portable System

301674	FILTAIR® 215
--------	--------------

FILTAIR® Capture 5 – Mobile System

951639	208/230 V with 10-ft. Pre-Assembled Extraction Arm
951640	208/230 V with 12-ft. Pre-Assembled Extraction Arm
951574	460 V with 10-ft. Pre-Assembled Extraction Arm
951575	460 V with 12-ft. Pre-Assembled Extraction Arm
301106	Self-Cleaning Filter

FILTAIR® SWX-D Single-Arm – Stationary System

951619	8-in. Diameter, 3 – 4.5 ft. Pre-Assembled Telescoping Extraction Arm
951513	8-in. Diameter, 7 ft. Pre-Assembled Standard Extraction Arm
951514	8-in. Diameter, 10 ft. Pre-Assembled Standard Extraction Arm
951515	8-in. Diameter, 12 ft. Pre-Assembled Standard Extraction Arm

FILTAIR® SWX-S Single-Arm – Stationary System*

951620	8-in. Diameter, 3-4.5-ft. Pre-Assembled Telescoping Extraction Arm
951516	8-in. Diameter, 7-ft. Pre-Assembled Extraction Arm
951517	8-in. Diameter, 10-ft. Pre-Assembled Extraction Arm
951518	8-in. Diameter, 12-ft. Pre-Assembled Extraction Arm
951760	8-in. Diameter, 10-ft. Pre-Assembled ZoneFlow™ Extraction Arm and Motor Control Box
951761	8-in. Diameter, 12-ft. Pre-Assembled ZoneFlow™ Extraction Arm and Motor Control Box

FILTAIR® SWX ZoneFlow™ Dual-Arm – Stationary System**

951621	8-in. Diameter, 3-4.5-ft. Pre-Assembled Telescoping Extraction Arm
951519	8-in. Diameter, 7-ft. Pre-Assembled Extraction Arm
951520	8-in. Diameter, 10-ft. Pre-Assembled Extraction Arm
951521	8-in. Diameter, 12-ft. Pre-Assembled Extraction Arm
951762	8-in. Diameter, 10-ft. Pre-Assembled ZoneFlow™ Extraction Arm and Motor Control Box
951822	8-in. Diameter, 12-ft. Pre-Assembled ZoneFlow™ Extraction Arm and Motor Control Box

FILTAIR® MWX-D – Stationary System

951507	8-in. Diameter, 7-ft. Pre-Assembled Extraction Arm
951508	8-in. Diameter, 10-ft. Pre-Assembled Extraction Arm
951509	8-in. Diameter, 12-ft. Pre-Assembled Extraction Arm

FILTAIR® MWX-S – Stationary System

951510	8-in. Diameter, 7-ft. Pre-Assembled Extraction Arm
951511	8-in. Diameter, 10-ft. Pre-Assembled Extraction Arm
951512	8-in. Diameter, 12-ft. Pre-Assembled Extraction Arm



FILTAIR® Centralized System

Other sizes and external configurations available - We'll help you find the best solution for your application.

301108018	FILTAIR® 4000, 230V	10hp internal collector w/front inlet (low profile)
300900005	FILTAIR® 4000, 460V	10hp internal collector
301109001	FILTAIR® 6000, 230V	10hp internal collector
300901003	FILTAIR® 6000, 460V	15hp internal collector
300902003	FILTAIR® 8000, 460V	20hp internal collector
300903003	FILTAIR® 12000 460V	30hp internal collector

Miller® FILTAIR® Fume Extraction Systems

FILTAIR® Extraction Arms - Centralized System

301242	6-in Diameter, 3-4.5 ft. Pre-Assembled Telescoping Extraction Arm
301237	8-in Diameter, 3-4.5 ft. Pre-Assembled Telescoping Extraction Arm
300953	6-in Diameter, 7-ft Pre-Assembled Extraction Arm
300954	6-in Diameter, 10-ft Pre-Assembled Extraction Arm
300955	6-in Diameter, 12-ft Pre-Assembled Extraction Arm
300980	8-in Diameter, 7-ft Pre-Assembled Extraction Arm
300981	8-in Diameter, 10-ft Pre-Assembled Extraction Arm
300982	8-in Diameter, 12-ft Pre-Assembled Extraction Arm
951810	6-in Diameter, 10-ft ZoneFlow™ Pre-Assembled Extraction Arm and Motor Control Box
951811	6-in Diameter, 12-ft ZoneFlow™ Pre-Assembled Extraction Arm and Motor Control Box
951758	8-in Diameter, 10-ft ZoneFlow™ Pre-Assembled Extraction Arm and Motor Control Box
951759	8-in Diameter, 12-ft ZoneFlow™ Pre-Assembled Extraction Arm and Motor Control Box
300952	6-in Diameter, Arm Mounting Bracket (one required per arm) and Ducting Kit
300771	8-in Diameter, Arm Mounting Bracket (one required per arm) and Ducting Kit
301044***	FILTAIR® Low Profile Hood - Available in sizes 4 x 4 feet up to 16 x 16 feet in one-foot increments

Weld Booth

295140	4 ft. Single Panel
295126	5 ft. Single Panel
296015	6 ft. Single Panel

Filtair® Purifier

301745	230 V / 3-phase / 60 Hz, 7,000 cfm, includes 8 MERV 15 filters
301746	460 V / 3-phase / 60 Hz, 7,000 cfm, includes 8 MERV 15 filters
301769	575 V / 3-phase / 60 Hz, 7,000 cfm, includes 8 MERV 15 filters

Accessories

300896	FILTAIR® 130 and 215 Extraction Hose (17 ft.)
300897	FILTAIR® 130 and 215 Extraction Hose (34 ft.)
300895	FILTAIR® 130 and 215 Slotted Magnetic Nozzle (12 in.)
300668	FILTAIR® 130 and 215 Flexible Funnel Nozzle with Magnetic Base
301743	FILTAIR® 130 and 215 Y-Adapter
295743	FILTAIR® 130 and 215 Machine-to- Y-Adapter
295907	FILTAIR® 130 and 215 Hose-To-Hose Connector
292774	Auto Start-Stop
301267	FILTAIR® 130 FilTek™ XL Replacement Filter
301675	FILTAIR® 215 FilTek™ XL Replacement Filter, MERV 16 FR Rated
300539	FILTAIR® MWX and SWX FilTek™ XL Disposable Replacement Filter
300540	FILTAIR® MWX and SWX FilTek™ XL Self-Cleaning Replacement Filter
301106	FILTAIR® Capture 5 FilTek™ XL Replacement Filter
300927	FILTAIR® Centralized 4000-12000 FilTek™ XL Replacement Filter
295581	Weld Booth Hardware Kit* (Hardware, Curtain Rod, and Weld Curtain)
296823	FILTAIR® Purifier FilTek™ XL Replacement Filter
300763	SWX Hood Light with Arc Sensor
300689	MWX Hood Light with Arc Sensor

* Includes SWX-5 cabinet, self-cleaning control box and filter, blower, on/off control box, duct, and 8-in arm. 115 VAC wiring and mounting bracket NOT included.

** Includes blower, on/off control box, duct, backdraft dampers, and 8-in arm. 115 VAC wiring and mounting bracket NOT included.

*** Additional sizes available

* Order one hardware kit per booth.

Customer Reviews

"It only took about two days after installation and our employees began noticing a significant difference in air quality." - **Jeff H.**

"The biggest surprise for me is that we haven't had to change the filter. They've been running every day since we got them, and they work just as well as they did when we installed them." - **Spencer R.**

"Bar none, it's hands down one of the finest systems I've ever had. After all the years of having a slight fog of fumes in the air, then after installing the Miller system, we are actually able to see a lot better. It makes a whole lot of difference in the work environment." - **Donnie M.**

"We've been using the FILTAIR® MWX for several months now. Employees are not disturbed by the sound, and you can hardly notice it's there while in use." - **Ben P.**



[MillerWelds.com/FILTAIR](https://www.millerwelds.com/FILTAIR)

#295403 ©2025 Miller Electric Mfg. LLC

