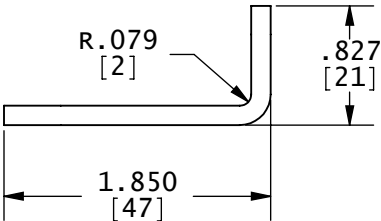
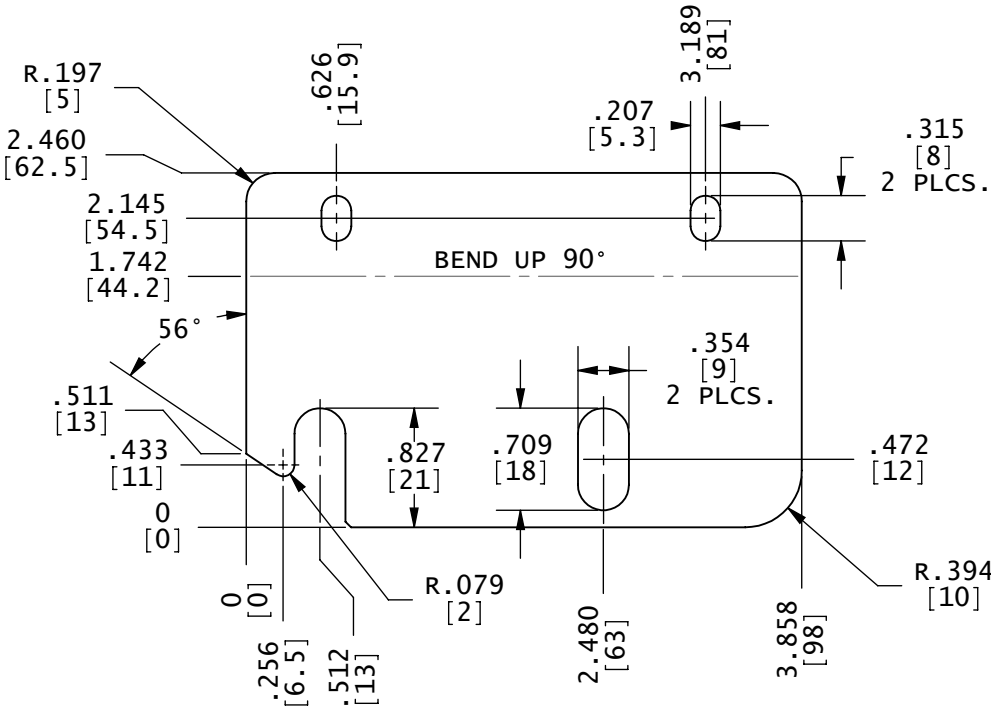
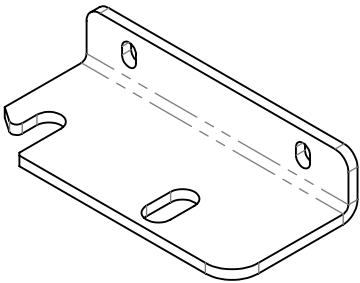
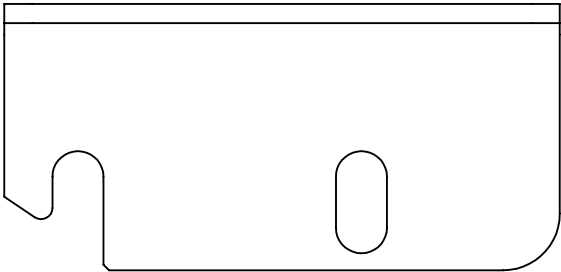



This print is and will remain the property of Miller Electric Mfg Co, Appleton, WI. Furnished with the understanding it is not to be duplicated in any manner without approval of Miller Electric Mfg Co. This print is furnished to assist order requirements and will be returned to Miller Electric Mfg Co upon request.

MATERIAL: 10 GA HRPO STEEL ASTM A569

FINISH: NONE



** ROHS COMPLIANT **

					Tolerances Unless Otherwise Specified	 MILLER ELECTRIC MFG. CO., APPLETON, WI. USA		
					Decimal ±: .015 [.4]			
					Fractional ±:	Title: BRACKET LAYOUT, MTG MOTOR MOTOMAN EA1900N		
					Angular ±: 1°			
					Finish:	DRAWING NOT TO SCALE		
A	05-21-07	CFK DWS		ORIGINAL IMPLEMENTATION		Drawn By: CFK/DWS	Size A	Drawing No 233984
Rev	Date	By	ECO	Revision Description		Date: 05-21-07		Rev A