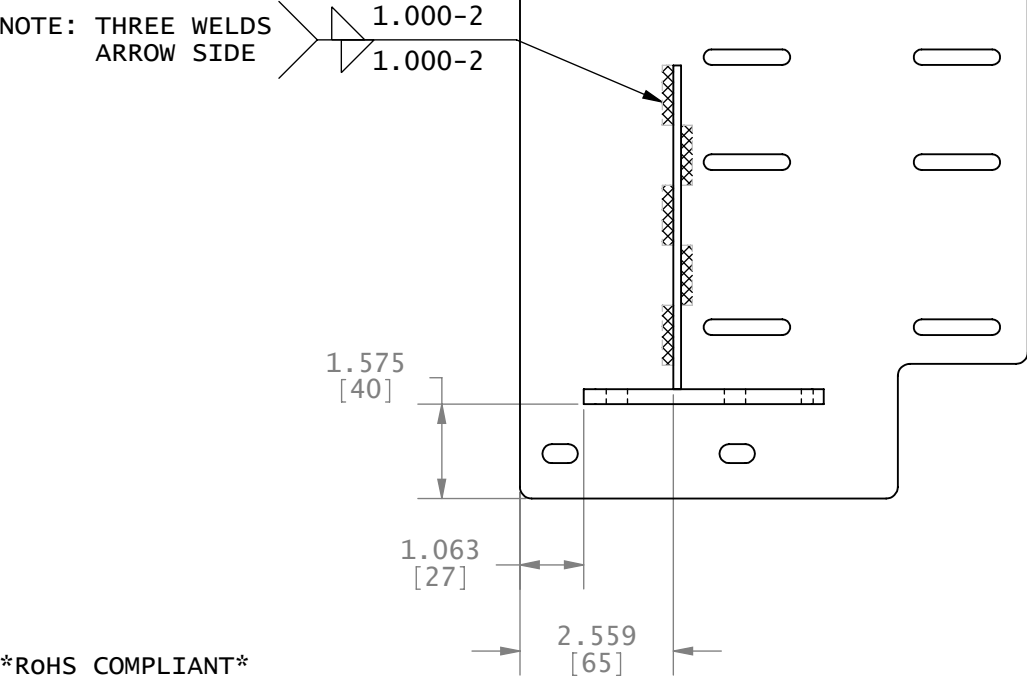
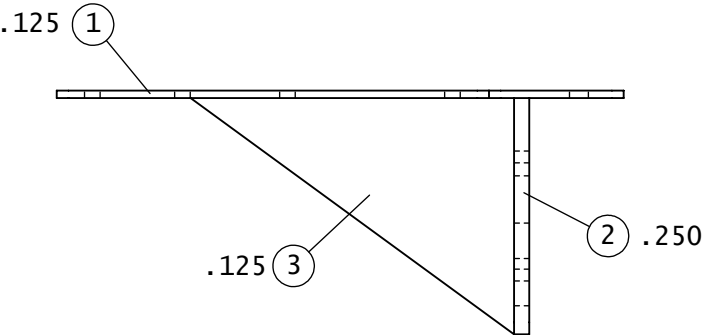
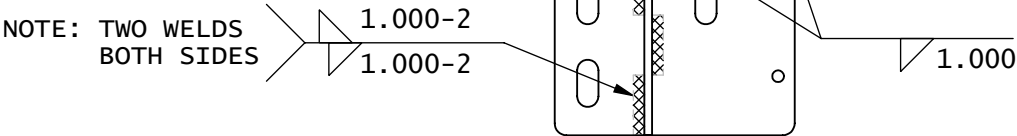
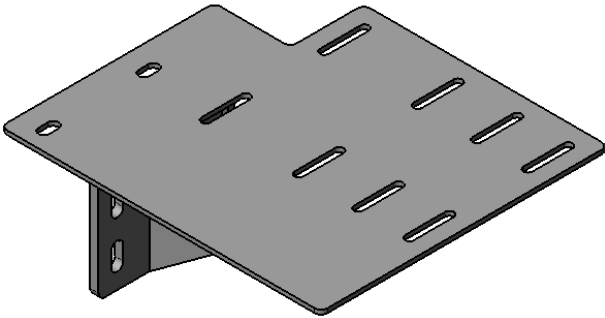


This print is and will remain the property of Miller Electric Mfg Co, Appleton, WI. Furnished with the understanding it is not to be duplicated in any manner without approval of Miller Electric Mfg Co. This print is furnished to assist order requirements and will be returned to Miller Electric Mfg Co upon request.




MATERIAL: SEE BILL OF MATERIAL
FINISH: PAINT POWDER BLACK PER MILLER PAINT STANDARD 179295



ROHS COMPLIANT

Rev	Date	By	ECO	Revision Description
C	09-12-13	PEK DWS	020918	REVISED WELDING NOTES
B	03-25-13	PEK DWS	019473	MODIFIED MOTOR MTG BRACKET (ITEM 1)
A	05-21-07	CFK DWS		ORIGINAL IMPLEMENTATION

Tolerances Unless Otherwise Specified		 Miller. MILLER ELECTRIC MFG. CO., APPLETON, WI. USA		
Decimal ±: .031		Title: BRACKET, MTG MOTOR MOTOMAN EA1400N		
Fractional ±:				
Angular ±: 1°		DRAWING NOT TO SCALE		CONFIDENTIAL
Finish:		Drawn By: CFK/DWS	Size A	Drawing No 233883
		Date: 05-21-07		Rev C