

Spark Your Project

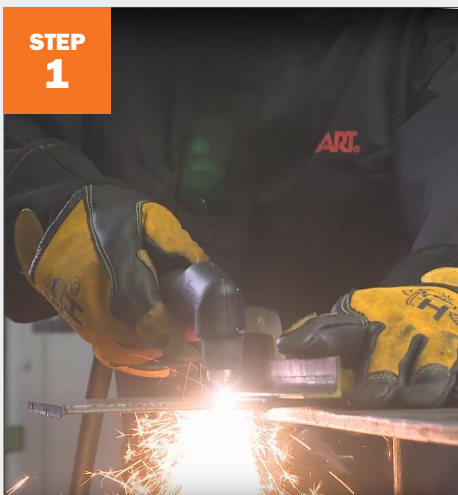
How to MIG Weld a Grinder Stand

Tools & Materials Needed:

- Hobart® Handler® 140 MIG Welder
- Hobart® AirForce® 27i Plasma Cutter
- Drill Press
- 1 – 6" x 8" x 3/16" Top plate (sizes may vary)
- 1 – 12" x 12" x 1/4" Bottom plate
- 1 – 3" x 3" x 1/8" Square Tubing (length desired may vary)



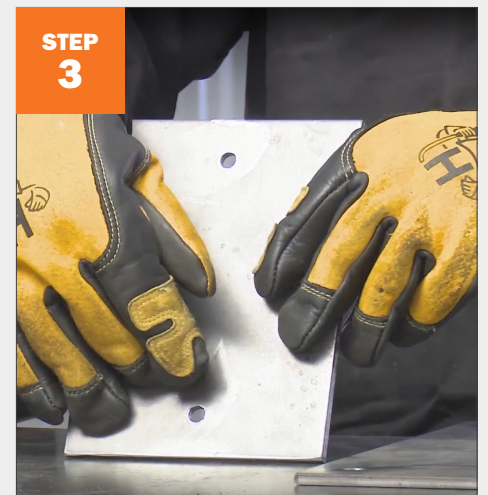
Steps:



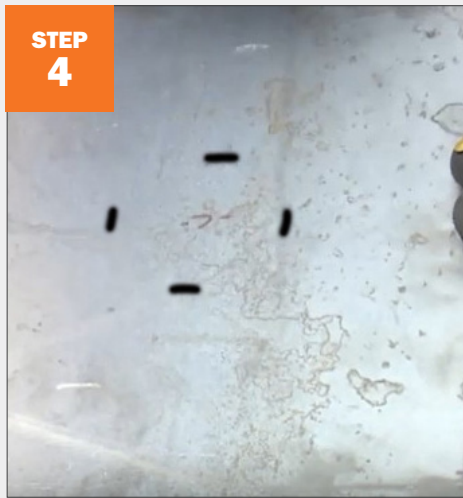
STEP 1
Cut plate material into top and bottom plate measurements listed above. Top plate sizes may vary depending on the size/name brand of the grinder.



STEP 2
Drill mounting holes 1" in for each corner of bottom plate so it can be mounted to the floor.



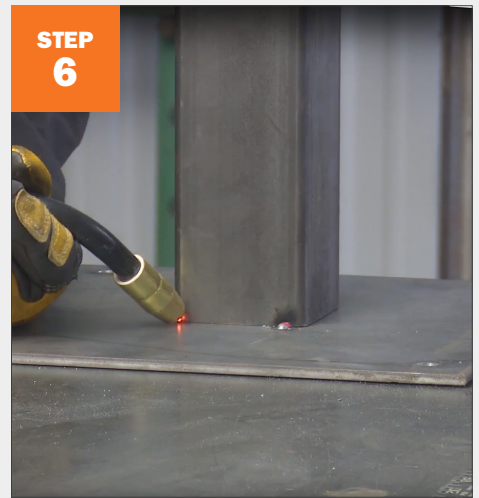
STEP 3
Drill holes in the top plate to match the mounting holes on your grinder.



STEP 4
Place four marks on base plate to outline and center post.



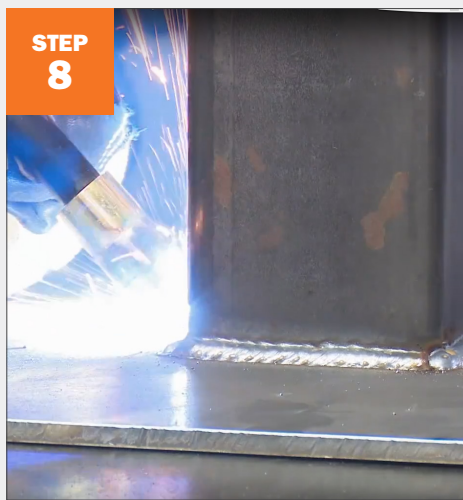
STEP 5
Center and square post on base plate.



STEP 6
Tack weld post to base plate to hold in place.



STEP 7
Check to make sure the post is square to the base plate.



STEP 8
Weld post to bottom plate.



STEP 9
Make sure post and top plate are square, then tack weld into place.



STEP 10
Double check for square, then finish welding the top plate to the post.



STEP 11
Mount base plate to floor with four bolts.



STEP 12
Mount grinder to top plate using the required number of bolts.